

PHILLIPSX PRESENTS *THIERRY NOIR: RUSH HOUR*, A CROSS-CITY SHOWCASE IN HONG KONG AND TOKYO

A Solo Selling Exhibition Dedicated to Thierry Noir's Early 1980s Works and New 2025 Paintings

Marking the Most Significant Project for the Artist in Asia to Date

On View across Phillips' Asia Headquarters in Hong Kong's West Kowloon Cultural District and Phillips' Tokyo Exhibition Space in Roppongi from 9-31 July 2025



Our goal is to put an end to the disorder, 2025
(On view in Hong Kong)



The start toward a rapid solution, 2025
(On view in Tokyo)

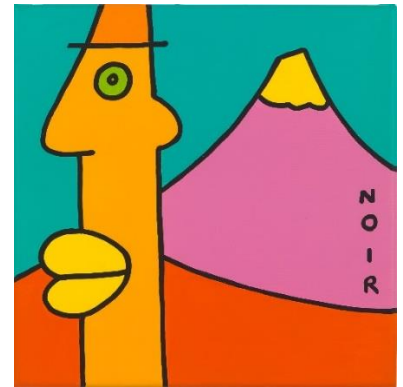
Hong Kong/ Tokyo – 26 June 2025 – [PhillipsX](#), a selling exhibition platform operated by the global Private Sales team at Phillips, is pleased to present [Thierry Noir: Rush Hour](#), an expansive dual-city showcase of works by renowned French artist Thierry Noir, opening this July in Tokyo and Hong Kong. Marking the artist's most significant project in Asia to date, this selling exhibition draws a bold arc from the raw urgency of his early 1980s works to the vibrant, large-scale pieces of his contemporary practice. Encompassing over 40 years of artistic evolution, *Thierry Noir: Rush Hour* juxtaposes rarely seen early 1980s works—many never before exhibited or shown outside Europe—with a series of new paintings and site-specific murals created exclusively for this project.

Takako Nagasawa, Senior International Specialist, Modern & Contemporary Art, Phillips, said: "Following the success of *Thierry Noir: Gold* at Phillips New York and a sold-out release on our Dropshop platform last July, we are thrilled to collaborate once again with the iconic artist for a dual-city showcase in Asia. Noir gained international recognition in 1984 as the first artist to paint murals on the Berlin Wall. With a vibrant career spanning five decades,

he continues to make his mark on the global art scene. We look forward to welcoming visitors to our galleries in Tokyo and Hong Kong to experience the dynamic energy and rhythm that define his work."

Thierry Noir: Rush Hour (Tokyo)

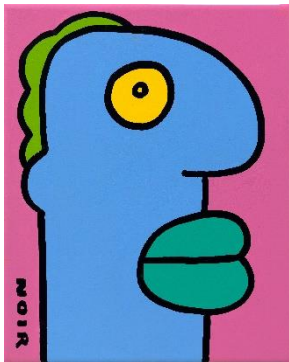
Showing at Phillips Tokyo in the Piramide Building in Roppongi from 9-31 July, visitors will encounter an immersive installation featuring floor-to-ceiling murals hand painted in situ by Noir and all-new paintings from the *Rush Hour* series. Conceived as a dynamic collision of past and present, the installation immerses viewers in the artist's signature visual language of bold outlines, vivid colour, and stylised characters arranged in interlocking compositions to reflect the breakneck speed, density, and non-stop motion of Tokyo as a modern metropolis. As a reflective counterpoint, visitors in Tokyo can also view smaller scale drawings on paper created in the shadow of the Berlin Wall during the 1980s.



Mount Fuji has an aura of grace that comforts me, 2025
(On view in Tokyo)

Date & Time: 9-31 July, Monday to Friday, 11am to 6pm (closed on weekends)

Location: Phillips Tokyo, 4F Piramide Building, 6-6-9 Roppongi, Minato-ku, Tokyo 106-0032



Some questions deserve to be answered with a silent response, 2025 (left), with an early 1980s painting (right)
(On view in Tokyo)



This morning, I feel relaxed and I have good ideas, 2025 (left) with an early 1980s painting (right)
(On view in Tokyo)

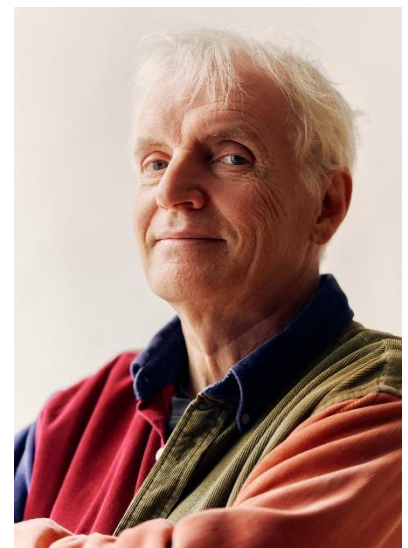
Thierry Noir: Rush Hour (Hong Kong)

In Hong Kong's Phillips' Asia headquarters in West Kowloon, *Thierry Noir: Rush Hour* continues with an additional focus upon the continuities between Noir's 1980s works and his modern-day practice. Tiny early works portraying Noir's now iconic heads and other familiar compositions are presented for the first time in dialogue with large scale 2025 paintings. The juxtaposition of past and present serves to illustrate how Noir's recurring motifs have evolved through time, but also how they remain forever rooted in his enduring visual vocabulary, establishing a singular artistic vision. On Friday, 18 July (5-7pm HKT), visitors will have the rare opportunity to witness the artist in action during a live painting performance, alongside an engaging fireside chat delving into his inspirations and creative process.

Date & Time: 9-31 July, Monday to Friday, 10am to 6pm (closed on weekends)

Fireside Chat & Live Painting by Thierry Noir: Friday, 18 July, 5-7pm

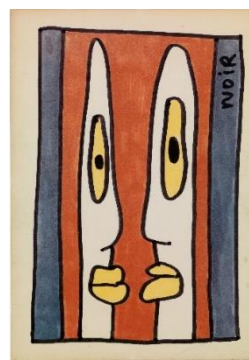
Location: Phillips Asia Headquarters, G/F, WKCD Tower, West Kowloon Cultural District, No. 8 Austin Road West, Kowloon, Hong Kong



Thierry Noir recent portrait
Credit: Alex Killian



A certain day-to-day approach to the situation gives me complete control over my entire development, 2025 (right), with an early 1980s drawing (left)
(On view in Hong Kong)



An intense exchange after a short business meeting, 2025 (right), with an early 1980s drawing (left)
(On view in Hong Kong)



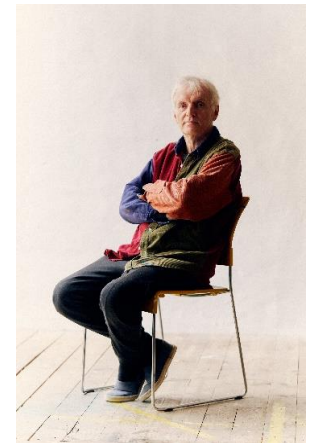
“Rush Hour is about the intensity of now, about living in a constant state of motion,” says **Thierry Noir**. “But it’s also about how that intensity connects back to the urgency I felt painting the Berlin Wall. Many years later, the same energy is still there, just transformed.”

ABOUT THE ARTIST

Thierry Noir (b. 1958) first emerged in the 1980s as a politically engaged artist working in exile-like conditions in West Berlin and living in unofficial accommodation. His now iconic visual motifs of elongated profiles, flattened faces and simplified forms originated across large spans of the Berlin Wall as symbols of resistance and endurance. Today, Noir’s vividly colorful imagery is widely renowned throughout the world and with a career spanning five decades, Noir remains a tireless creator, continually expanding his visual universe.



Thierry Noir at the Berlin Wall in 1986
Credit: Thierry Noir Studio



Thierry Noir recent portrait
Credit: Thierry Noir Studio



十週年

PHILLIPS
富藝斯

2025: CELEBRATING 10 YEARS
OF PHILLIPS ASIA

ABOUT PHILLIPSX

PhillipsX is a dynamic selling exhibition platform operated by the global Private Sales team at Phillips, the destination for international collectors to buy and sell the world’s most important Modern and Contemporary art, design, and luxury items. Through PhillipsX, Phillips’ influence extends beyond the realm of auction and into the broader global cultural landscape by offering a boundary-less discovery, selling, and buying experience based on the traditional retail gallery model. PhillipsX highlights notable artists and creators of the 20th and 21st centuries, creating new and important dialogues around established and emerging artists, movements, genres, and mediums. Through PhillipsX, the team continues to modernize collecting experiences with imagination, expertise, and relevancy.

FOLLOW US ON:



ABOUT PHILLIPS

Phillips: where the world's curious and bold connect with the art, design, and luxury that inspires them. As a leading global platform for buying and selling 20th and 21st century works, Phillips offers dedicated expertise in the areas of Modern and Contemporary Art, Design, Photographs, Editions, Watches, and Jewels. Auctions and exhibitions are primarily held in New York, London, Geneva, and Hong Kong, with representative offices based throughout Europe, the United States, and Asia. Phillips offers a regular selection of live and online auctions, along with items available for immediate purchase. Phillips also offers a range of services and advice on all aspects of collecting, including private sales and assistance with appraisals, valuations, and financial planning.

Visit phillips.com for further information.

PRESS CONTACT:

Ingrid Hsu, Head of PR & Corporate Communications, Asia ingridhsu@phillips.com +852 2318 2043

PHILLIPS NEW YORK – 432 Park Avenue, New York, NY 10022

PHILLIPS LONDON – 30 Berkeley Square, London, W1J 6EX

PHILLIPS HONG KONG – G/F, WKCD Tower, West Kowloon Cultural District, No. 8 Austin Road, West Kowloon

小红书



WeChat