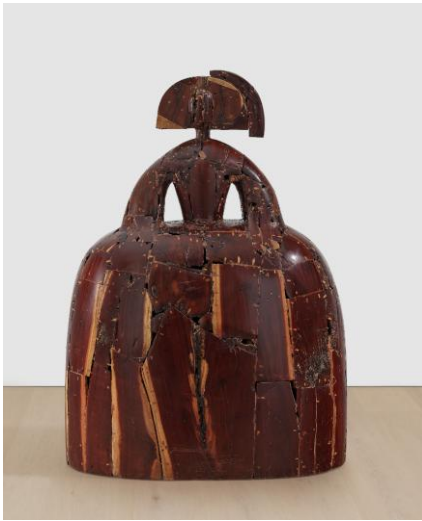


# PHILLIPS

PRESS RELEASE

## PHILLIPS ANNOUNCES HIGHLIGHTS FROM THE FEBRUARY MODERN & CONTEMPORARY ART SALE

### Auction Showcases Notable Works and Charity Lots Benefiting the Cancer Research Institute



**Manolo Valdés**  
*Reina Mariana*, 1992  
Estimate: \$250,000 - 350,000

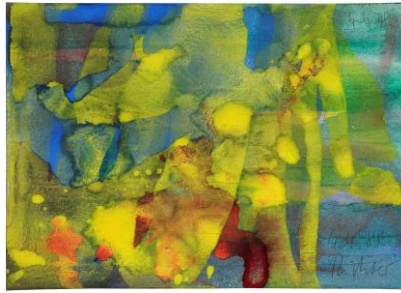


**Sam Gilliam**  
*Dew*, 1974-1975  
Estimate: \$200,000 - 300,000

NEW YORK – 11 FEBRUARY 2026 - Phillips is pleased to announce highlights from its Modern & Contemporary Art sale on 28 February at 432 Park Avenue, presenting more than 160 works that span over a century of artistic production. Leading the auction is Manolo Valdés' *Reina Mariana* from 1992, a carved olive-wood sculpture that reinterprets Diego Velázquez's court portrait of Queen Mariana of Austria as a bold, faceless silhouette defined by textured inlays and striking physical presence. The sale also features Sam Gilliam's circular *Dew* (1974–75), an example of the artist's richly experimental approach during the mid-1970s. Rounding out the top highlights is Emily Kame Kngwarreye's *My Country*, 1995, a dynamic expression of the artist's signature visual language. This season, Phillips is also honored to present a group of works sold to benefit the Cancer Research Institute, with proceeds supporting the organization's pioneering immunotherapy research. The present sale includes two works sold to support the charity – Ed Ruscha's *Blurred City* and Jennifer Guidi's *Downvalley*, both from 2025. Formerly known as *New Now*, the February Modern & Contemporary Art sale continues to broaden its scope, offering collectors an expanded, cross-generational perspective on the evolving art-historical landscape.



**Alex Katz**  
*Ada*, 1986  
 Estimate: \$70,000 - 100,000



**Gerhard Richter**  
*4.4.88*, 1988  
 Estimate: \$100,000 - 150,000



**David Smith**  
*Untitled*, 1959  
 Estimate: \$180,000 - 250,000



**Sasha Gordon**  
*American Girl*, 2019  
 Estimate: \$10,000 - 15,000



**Dindga McCannon**  
*JAZZMOBILE!*, 2001  
 Estimate: \$30,000 - 40,000



**Firelei Báez**  
*Fragments of a crossroad*, 2016  
 Estimate: \$15,000 - 20,000



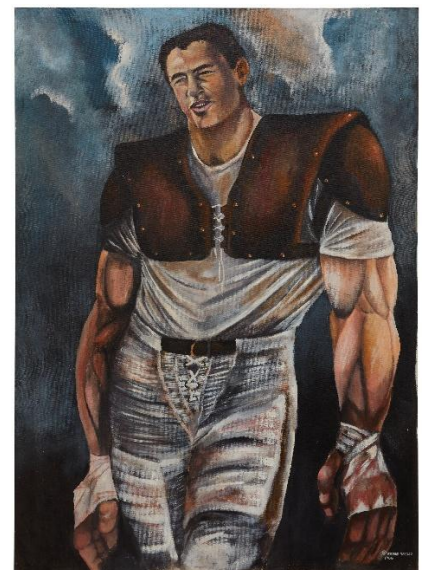
**Emily Kame Kngwarreye**  
*My Country*, 1995  
 Estimate: \$100,000 - 150,000



**Ed Ruscha**  
*Blurred City*, 2025  
 Estimate: \$65,000 - 85,000



**Sean Scully**  
*4.22.98*, 1998  
 Estimate: \$150,000 - 200,000



**Ernie Barnes**  
*Ron Mix Football Portrait*, 1966  
 Estimate: \$40,000 - 60,000

**Auction:** 28 February 2026  
**Auction viewing:** 20 – 27 February  
**Location:** 432 Park Avenue, New York, NY 10022  
**Click here for more information:** <https://www.phillips.com/auction/NY010126>

As Phillips marks its 230th anniversary in 2026, the house celebrates more than two centuries at the forefront of the global market for Modern & Contemporary Art, Design, and Luxury. Founded in 1796 by the charismatic

auctioneer Harry Phillips, the company has, since its earliest days, offered a distinct and forward-looking approach to sales and collecting. Over the centuries, Phillips has delivered record-breaking results and landmark offerings, while also pioneering new modes of collecting via the likes of Dropshop. Through its partnership with Bacs & Russo, Phillips continues to lead the industry in watches, setting new benchmarks for excellence, innovation, and connoisseurship. Today, Phillips remains true to the entrepreneurial spirit of its founder while redefining the role of a 21st century auction house.

#### ABOUT PHILLIPS

Phillips: where the world's curious and bold connect with the art, design, and luxury that inspires them. As a leading global platform for buying and selling 20th and 21st century works, Phillips offers dedicated expertise in the areas of Modern and Contemporary Art, Design, Photographs, Editions, Watches, and Jewels. Auctions and exhibitions are primarily held in New York, London, Geneva, and Hong Kong, with representative offices based throughout Europe, the United States, and Asia. Phillips offers a regular selection of live and online auctions, along with items available for immediate purchase. Phillips also offers a range of services and advice on all aspects of collecting, including private sales and assistance with appraisals, valuations, and financial planning.

Visit [phillips.com](http://phillips.com) for further information.

*\*Estimates do not include buyer's premium; prices achieved include the hammer price plus buyer's premium.*

#### PRESS CONTACTS:

NEW YORK – Jaime Israni, Head of PR and Corporate Communications, Americas  
Katie Zoni, PR Manager

[jisrani@phillips.com](mailto:jisrani@phillips.com)  
[kzoni@phillips.com](mailto:kzoni@phillips.com)

PHILLIPS NEW YORK – 432 Park Avenue, New York, NY 10022

PHILLIPS LONDON – 30 Berkeley Square, London, W1J 6EX

PHILLIPS HONG KONG – G/F, WKCD Tower, West Kowloon Cultural District, No. 8 Austin Road, West Kowloon

#### FOLLOW US ON:



WeChat